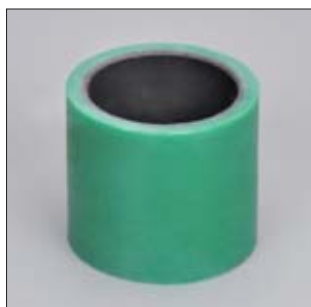


CRW 水下型缠绕轴承 Water-lub type bearings



■ 轴承材料结构

内衬：以PTFE纤维与高强度纤维填充内部水下润滑剂与高温环氧树脂作为滑动层；

衬背：以高强度玻璃纤维增强高温环氧树脂作为承载层。

■ Material structure

Sliding layer: Continuous wound PTFE and high-strength fibers encapsulated in an internally water lubricated, high temperature filled epoxy resin.

Backing: Continuous wound glass fiber encapsulated in a high temperature epoxy resin.

轴承技术数据 Technical data

材料性能 Material properties	标准 Standard	单位 Unit	CRW
密度 Density	ISO1183	g/cm ³	1.95
最大吸水率 Max. water absorption	ISO62	%	0.1
极限PV值 Max. PV (dry)	ITS026	N/mm ² × m/s	1.8
摩擦系数 Coefficient of friction	ITS025	μ	0.02 ~ 0.10
连续运行温度 Long-term application temperature	ITS029	°C	+100
短时运行温度 Short-term application temperature	ITS029	°C	+160
最低运行温度 Lowest application temperature	ITS029	°C	-100
最高速度 Max. Speed	ITS032	m/s	0.4
抗压强度 Compressive strength	ITS033	MPa	420
最大静载荷 Max. static load	ITS027	MPa	240
最大动载荷 Max. dynamic load	ITS028	MPa	120
邵氏硬度 Shore hardness	ISO868	D	95
线性热膨胀系数(25 ~ 150°C) Linear coef. of thermal Expansion	ISO11359	10 ⁻⁶ × K ⁻¹	13

*ITS: CSB内部测试标准 CSB company's internal test standards.

**除非特殊说明测试温度为23°C Test temperatures are 23°C unless otherwise stated.

典型特征 Typical features

极好的水下耐磨性能
高承载能力
优良的耐污性能
较好的化学抗性
非常低的摩擦系数

Excellent anti-wear property under water
High load capacity
Excellent dirty resistance
Good chemical resistance
Very lowest friction coefficient

典型应用 Typical applications

船舶机械
港口机械
水电闸门
清洗设备

Marine machinery
Port machinery
Water gate machinery
Cleaning equipment