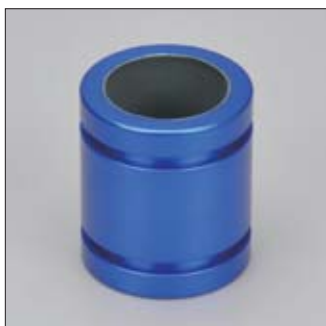
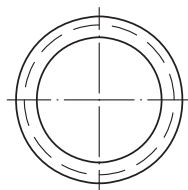
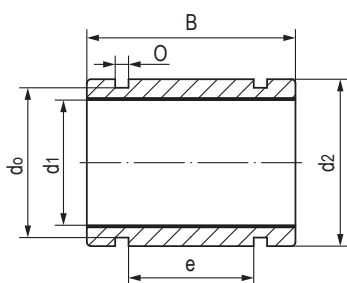


LINP-12R 短型直线轴承 Linear bearings, closed, short design



- 封闭式短型设计
 - 高精度与滚珠轴承相同
 - 标准滑动膜材料TEFPLAS[®] B
可选高耐磨材料TEFPLAS[®] G和符合FDA标准材料TEFPLAS[®] E
 - 阳极氧化铝合金适配器
 - 过盈配合压装
 - 免维护、低噪音
 - 使用温度 $\pm 200^{\circ}\text{C}$
- Closed and short design
 - High precision similar to preloaded ball bearing
 - Standard liner material TEFPLAS[®] B
Available materials: TEFPLAS[®] G and E
 - Anodized aluminum adapter
 - Assembly by press fitting
 - Maintenance-free and low noise
 - Operation temperature $\pm 200^{\circ}\text{C}$

标准规格 Standard specifications



产品编码 Part No.:

LINPB-12R-08-C

- 补偿间隙 Compensated Clearance
- 内径 Inner diameter
- 封闭式保持器 Closed housing
- 短设计 Short design
- 滑动膜材料 Liner material: B/G/E
- 座孔 Housing: H7 轴 Shaft: h6-h7

产品编码 Part No.	d ₁ [mm]	公差 Tolerance [mm]	d ₂ h7 [mm]	B h10 [mm]	O H10 [mm]	d ₀ H10 [mm]	e [mm]
LINPB-12R-08	8	+0.013/+0.035	15	24	2	12.2	10
LINPB-12R-10	10	+0.013/+0.035	17	26	2	14.4	12
LINPB-12R-12	12	+0.016/+0.043	19	28	2	16.6	14
LINPB-12R-16	16	+0.016/+0.043	24	30	2	21.3	14
LINPB-12R-20	20	+0.020/+0.053	28	30	2	25.5	14
LINPB-12R-25	25	+0.020/+0.053	35	40	3.2	30.9	22
LINPB-12R-30	30	+0.020/+0.053	40	50	3.2	35.9	30
LINPB-12R-40	40	+0.020/+0.064	52	60	4.1	46.2	40
LINPB-12R-50	50	+0.020/+0.064	62	70	4.1	56.3	50

产品编码 Part No.	轴径 Shaft [mm]	座孔 Housing [mm] H7	F max. [N] 最大动载荷 Dynamic Load			F max. [N] 最大静载荷 Static Load			重量 Weight [g]
			B	G	E	B	G	E	
LINPB-12R-08	8	15	1920	1536	1152	3840	3072	2304	7
LINPB-12R-10	10	17	2600	2080	1560	5200	4160	3120	9
LINPB-12R-12	12	19	3360	2688	2016	6720	5376	4032	11
LINPB-12R-16	16	24	4800	3840	2880	9600	7680	5760	18
LINPB-12R-20	20	28	6000	4800	3600	12000	9600	7200	23
LINPB-12R-25	25	35	10000	8000	6000	20000	16000	12000	44
LINPB-12R-30	30	40	15000	12000	9000	30000	24000	18000	65
LINPB-12R-40	40	52	24000	19200	14400	48000	38400	28800	123
LINPB-12R-50	50	62	35000	28000	21000	70000	56000	42000	177