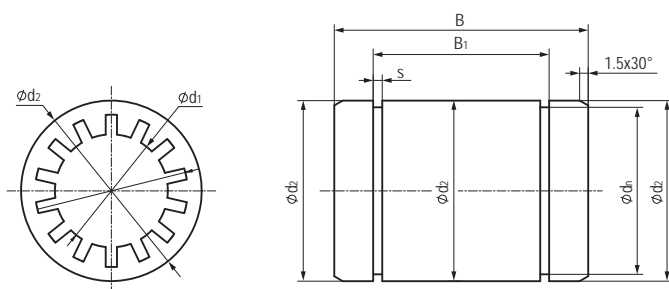


LIN-00 全塑料直线轴承 Plastic linear bearings



- 高性能材料EPB13制成
- 过盈配合压装
- 卡簧轴向加固
- 标准配合公差E9
- 适用于污垢或灰尘环境
- 使用温度-20℃/+60℃
- Made from EPB13 high-performance polymers
- Assembly by press fitting
- Axial secured by circlips
- Standard tolerance E9
- Unaffected by dirt and dust
- Operation temperature -20℃/+60℃

标准规格 Standard specifications



产品编码 Part No.:

LIN-00-06

轴承内径 Inner diameter

LIN-00 系列直线轴承
LIN-00 standard bearings

座孔 Housing: H7 轴 Shaft: h6-h9

产品编码 Part No.	d ₁ [mm]	公差 Tolerance [mm]	d ₂ [mm]	B [mm]	B ₁ [mm]	s [mm]	d _i [mm]
LIN-00-06	6	+0.020/+0.050	12	19	13.5	1.1	11.5
LIN-00-08	8	+0.025/+0.061	16	25	16.2	1.1	15.2
LIN-00-10	10	+0.032/+0.075	19	29	21.6	1.3	17.5
LIN-00-12	12	+0.032/+0.075	22	32	22.6	1.3	20.5
LIN-00-16	16	+0.032/+0.075	26	36	24.6	1.3	24.2
LIN-00-20	20	+0.040/+0.092	32	45	31.2	1.6	29.6
LIN-00-25	25	+0.040/+0.092	40	58	43.7	1.85	36.5
LIN-00-30	30	+0.040/+0.092	47	68	51.7	1.85	43.5

产品编码 Part No.	轴径 Shaft [mm]	座孔 Housing [mm]	公差 Tolerance [mm]	F max. [N] 最大动载荷 Dynamic Load P=2.5MPa	F max. [N] 最大静载荷 Static Load P=17.5MPa	重量 Weight [g]
LIN-00-06	6	12	0/+0.018	200	1400	2
LIN-00-08	8	16	0/+0.018	250	1750	4
LIN-00-10	10	19	0/+0.021	363	2538	7
LIN-00-12	12	22	0/+0.021	480	3360	9
LIN-00-16	16	26	0/+0.021	720	5040	13
LIN-00-20	20	32	0/+0.025	1125	7875	24
LIN-00-25	25	40	0/+0.025	1813	12688	47
LIN-00-30	30	47	0/+0.025	2550	17850	72