

SRB-01高速型回转支承轴承 High speed slewing ring bearings



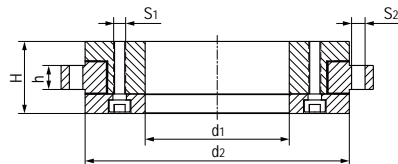
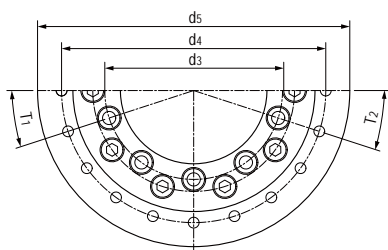
产品特性 Product features

- 自润滑，免维护
- 运行平稳，无噪音
- 高速运行，长寿命
- 标准滑动材料TEFPLAS™ G
可选符合FDA标准材料TEFPLAS™ E
- 转盘材料硬质氧化铝合金，可选不锈钢
- 工作温度：± 200℃
- Self-lubricating, maintenance-free
- Smooth operation, no noise
- High-speed operation and long life
- Standard material of sliding layer: TEFPLAS™ G
Available FDA grade material: TEFPLAS™ E
- Disc made of anodized aluminum, available stainless steel
- Operation temperature ± 200℃

产品技术数据表 Technical data table

项目 Item	单位 Unit	SRB-01-20	SRB-01-30	SRB-01-40	SRB-01-50	SRB-01-60	SRB-01-80	SRB-01-100
重量 Weight	kg	0.2	0.4	0.6	1.0	1.1	1.2	1.3
最大旋转速度 Max. Rotation Speed	r/min	450	350	280	240	220	200	180
最大静载荷 Max. Static Load	轴向 Axial	N	6000	15000	13000	16000	18000	19000
	径向 Radial	N	1000	1400	2600	3300	3700	6000
最大动载荷 Max. Dynamic Load	轴向 Axial	N	1700	4100	3700	4500	5000	5200
	径向 Radial	N	300	400	780	1000	1100	1800
最大允许倾覆力矩 Max. Permitted Overturning	Nm	80	200	300	400	500	800	700

标准规格 Standard specifications



产品编码 Part No.:

SRB-01-20

内径 Inner diameter
系列号 Design No.

产品编码 Part No.	d ₁ [mm]	d ₂ ± 0.2 [mm]	d ₃ [mm]	d ₄ [mm]	* d ₅ [mm]	H [mm]	h [mm]	T ₁ [mm]	T ₂ [mm]	S ₁ [mm]	S ₂ [mm]
SRB-01-20	20	60	31	70	80	24	8	6 × 60°	6 × 60°	M4	4.5
SRB-01-30	30	82	42.5	91	100	29	10	8 × 45°	8 × 45°	M4	4.5
SRB-01-40	40	100	53	110	120	30	10	8 × 45°	8 × 45°	M4	4.5
SRB-01-50	50	120	65	135	150	33	10	8 × 45°	16 × 22.5°	M4	4.5
SRB-01-60	60	130	74	145	160	33	10	10 × 36°	20 × 18°	M5	5.5
SRB-01-80	80	150	92	163	175	33	10	10 × 36°	20 × 18°	M5	5.5
SRB-01-100	100	160	112	170	185	34	12	12 × 30°	16 × 22.5°	M5	5.5

* 公差参照 Tolerance according to ISO 2768 mK

SRB-02高载型回转支撑轴承 High load slewing ring bearings



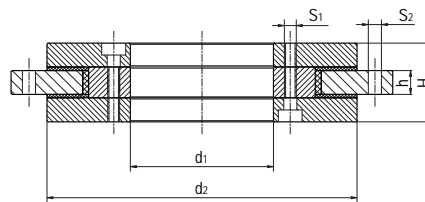
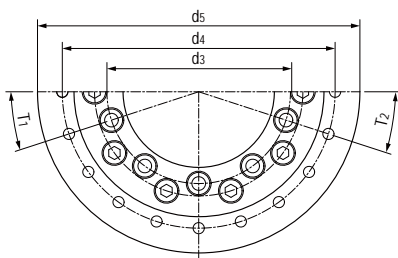
产品特性 Product features

- 滑动膜单元均采用高载低摩擦材料CSB-11
- 内外环均采用优质碳钢表面硬铬处理
- 极高载荷和扭矩
- 工作温度: -196℃/+260℃
- 易安装、免维护
- The Sliding element is a standard CSB-11 bearing with high load and low friction factor
- Inside and outside of the bearing are made with carbon steel and with chrome hard coated
- The part is with extremely high load capacity and torque
- Working temperature -196℃/+260℃
- Easy installation and maintenance free

产品技术数据表 Technical data table

项目 Item	单位 Unit	SRB-02-20	SRB-02-30	SRB-02-40	SRB-02-50	SRB-02-60	SRB-02-80	SRB-02-100	
重量 Weight	kg	0.5	1.0	1.5	2.5	3.0	3.5	4.0	
最大旋转速度 Max. Rotation Speed	r/min	400	300	250	200	190	160	150	
最大静载荷 Max. Static Load	轴向 Axial	N	30000	80000	140000	170000	180000	220000	230000
	径向 Radial	N	12000	19000	22000	29000	33000	40000	52000
最大动载荷 Max. Dynamic Load	轴向 Axial	N	8000	23000	37000	46000	51000	60000	64000
	径向 Radial	N	3700	5700	6800	8900	9900	12000	15000
最大允许倾覆力矩 Max. Permitted Overturning	Nm	200	600	1500	2500	2700	3300	6000	

标准规格 Standard specifications



产品编码 Part No.:

SRB-02-20

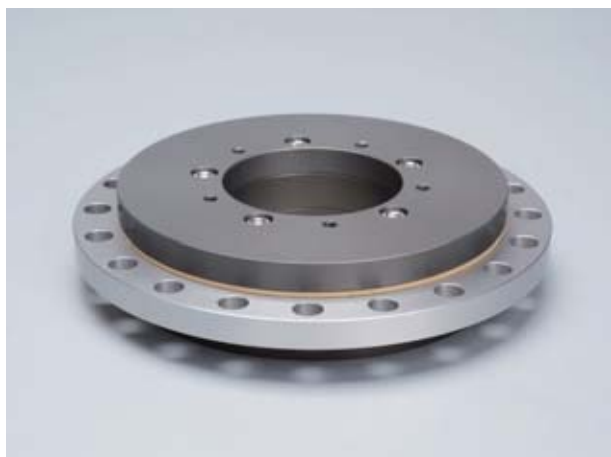
内径 Inner diameter

系列号 Design No.

产品编码 Part No.	d ₁ [mm]	d ₂ ± 0.2 [mm]	d ₃ [mm]	d ₄ [mm]	* d ₅ [mm]	H [mm]	h [mm]	T ₁ [mm]	T ₂ [mm]	S ₁ [mm]	S ₂ [mm]
SRB-02-20	20	60	31	70	80	24	8	6 × 60°	6 × 60°	M4	4.5
SRB-02-30	30	82	42.5	91	100	29	10	8 × 45°	8 × 45°	M4	4.5
SRB-02-40	40	100	53	110	120	30	10	8 × 45°	8 × 45°	M4	4.5
SRB-02-50	50	120	65	135	150	33	10	8 × 45°	16 × 22.5°	M4	4.5
SRB-02-60	60	130	74	145	160	33	10	10 × 36°	20 × 18°	M5	5.5
SRB-02-80	80	150	92	163	175	33	10	10 × 36°	20 × 18°	M5	5.5
SRB-02-100	100	160	112	170	185	34	12	12 × 30°	16 × 22.5°	M5	5.5

* 公差参照 Tolerance according to ISO 2768 mK

SRB-03回转支承轴承 Slewing ring bearings



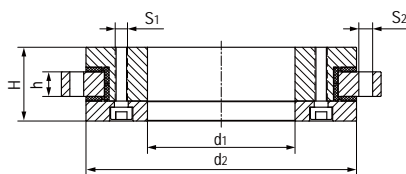
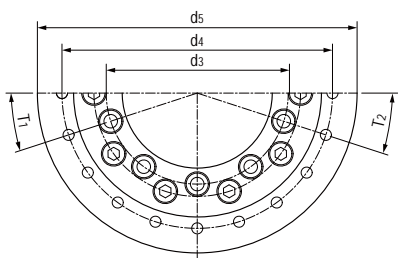
产品特性 Product features

- 自润滑、免维护
- 滑动原件采用高耐磨材料EPB13制成
- 回转环表面硬化处理
- 工作温度: -50℃/+90℃
- 可选铝合金或不锈钢304材料
- Maintenance-free, self lubricating
- Sliding elements made of high wear resistance EPB13
- Slewing ring with high stiffening
- Working temperature -50℃/+90℃
- Available as aluminum or stainless steel version 304

产品技术数据表 Technical data table

项目 Item	单位 Unit	SRB-03-20	SRB-03-30	SRB-03-40	SRB-03-50	SRB-03-60	SRB-03-80	SRB-03-100
重量 Weight	kg	0.2	0.4	0.6	1.0	1.1	1.2	1.3
最大旋转速度 Max. Rotation Speed	r/min	300	230	190	160	150	130	120
最大静载荷 Max. Static Load	轴向 Axial	N	15000	27000	35000	40000	50000	55000
	径向 Radial	N	2300	5000	6000	8000	10000	16000
最大动载荷 Max. Dynamic Load	轴向 Axial	N	4000	7000	9000	10000	15000	16000
	径向 Radial	N	600	1500	1800	2500	3000	5000
最大允许倾覆力矩 Max. Permitted Overturning	Nm	100	200	400	600	800	1000	1500

标准规格 Standard specifications



产品编码 Part No.:

SRB-03-20

内径 Inner diameter

系列号 Design No.

产品编码 Part No.	d ₁ [mm]	d ₂ ± 0.2 [mm]	d ₃ [mm]	d ₄ [mm]	+ d ₅ [mm]	H [mm]	h [mm]	T ₁ [mm]	T ₂ [mm]	S ₁ [mm]	S ₂ [mm]
SRB-03-20	20	60	31	70	80	24	8	6 × 60°	6 × 60°	M4	4.5
SRB-03-30	30	82	42.5	91	100	29	10	8 × 45°	8 × 45°	M4	4.5
SRB-03-40	40	100	53	110	120	30	10	8 × 45°	8 × 45°	M4	4.5
SRB-03-50	50	120	65	135	150	33	10	8 × 45°	16 × 22.5°	M4	4.5
SRB-03-60	60	130	74	145	160	33	10	10 × 36°	20 × 18°	M5	5.5
SRB-03-80	80	150	92	163	175	33	10	10 × 36°	20 × 18°	M5	5.5
SRB-03-100	100	160	112	170	185	34	12	12 × 30°	16 × 22.5°	M5	5.5

* 公差参照 Tolerance according to ISO 2768 mK