



产品特性 Product features

- 专门为金属薄板配合开发的自润滑塑料轴承。安装简易。使用避震和耐磨性能相结合的CSB-EPB3M材料制成。可提供耐高温和耐腐蚀材料CSB-EPB5制成的轴承
- 免维护，自润滑
- 侧面开槽设计，易于安装
- 开槽设计可补偿材料膨胀
- 双法兰设计更安全
- 适用于旋转和直线运动
- 对安装孔精度要求较低
- The self-lubricated bearing is developed specially for the metal plate fitting. It is made with the CSB-EPB3M material which is good at shock absorption and wear resistance. Alternative material CSB-EPB5 is also available for high temperature application and corrosion resistance requirement
- Maintenance free, self-lubricated
- Side groove designation for easy assembly
- Groove design reserves the material expansion allowance
- Safety double flanges designation
- Suitable for rotation and sliding motions
- Lower tolerance requirement for the mounting holes

结构设计 Structure design

CSB-PCB[®] 塑料卡箍轴承采用了双法兰结构设计，专门为用于保护穿过金属板的轴。双法兰设计和斜开口缝的设计使得轴承装配变得简单；双法兰确保轴承即使在直线使用过程中也不会从座孔中脱落。

CSB-PCB[®] Plastic clip bearing is designed with double flange to protect the shaft mounted through metal housings. The double flange and slipped gap ensures easy assembly of the bearings. The double flange design can also protect the bearing from moving out of the housing.

材料设计 Material design

CSB-PCB[®] 塑料卡箍轴承是采用耐磨性较好的CSB-EPB3M材料制成，轴承具有良好的自润滑性能，可以完全干运行；当然，由于CSB-EPB3M对各种润滑剂具有良好的抗性，所以使用过程中额外的润滑剂也是被允许的。

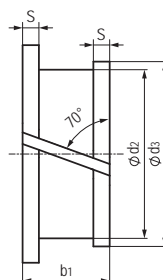
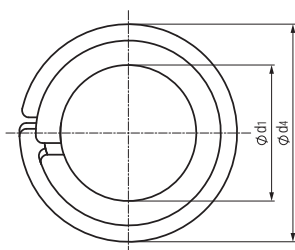
CSB-PCB[®] Plastic Clip Bearing is made from CSB-EPB3M material which is a good wear resistance polymer. The bearing self-lubricating performance is excellent for dry operation conditions. At the same time, continuous lubricating is allowed during the operation because this material is also with good isolation feature against the most common lubricants.

安装设计 Assembly design

轴承被安装时，从轴承法兰边较小的一侧压入到法兰边较大侧为止。螺旋形的斜槽可以保证它被很容易地压入到金属薄板中。这个斜槽也能够补偿圆周方向的膨胀。因此，轴承仍有可能保持较小的间隙。卡箍轴承的推荐使用座孔公差为H7，可用于最大为H13公差场合；卡箍轴承允许在座孔中旋转。

During the assembly, the bearing is pressed into the housing from the smaller flange end until the bigger flange end is pressed into the position. The spiral shape slip gap could not only make the bearing easy to be pressed into the metal housing, but also help to compensate any possible material expansion caused by the squeeze derived from the pressing. The recommended housing tolerance is H7 while the bearing could fit with the housing tolerance range up to H13. The bearing is allowed to be rotating in the housing after assembling.

PCB标准塑料卡箍轴承 Standard plastic clip bearings



产品编码 Part No.:

PCB-05-02

高度 High

内径 Inner diameter

座孔 Housing: H7 轴 Shaft: h9

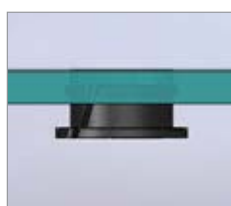
产品编码 Part No.	d_1 [mm]	公差 Tolerance [mm]	d_2 [mm]	d_3 [mm]	d_4 [mm]	$S_{0.10}$ [mm]	$b_1^{+0.20}$ [mm]
PCB-03-02	3	+0.020/+0.080	4.2	4.8	6	0.6	3.2
PCB-04-02	4	+0.030/+0.105	5.2	5.9	7	0.6	3.2
PCB-05-02	5	+0.030/+0.105	6.2	6.8	8	0.6	3.2
PCB-05-03	5	+0.030/+0.105	6.2	6.8	8	0.6	4.2
PCB-06-02	6	+0.030/+0.105	7.2	7.8	11	0.6	3.2
PCB-06-03	6	+0.030/+0.105	7.2	7.8	11	0.6	4.2
PCB-08-02	8	+0.040/+0.130	9.6	10.4	13	0.8	3.6
PCB-08-03	8	+0.040/+0.130	9.6	10.4	13	0.8	4.6
PCB-10-02	10	+0.040/+0.130	11.6	12.4	15	0.8	3.6
PCB-10-025	10	+0.040/+0.130	11.6	12.4	15	0.8	4.1
PCB-10-03	10	+0.040/+0.130	11.6	12.4	15	0.8	4.6
PCB-12-02	12	+0.050/+0.160	13.6	14.4	17	0.8	3.6
PCB-12-025	12	+0.050/+0.160	13.6	14.4	17	0.8	4.1
PCB-12-03	12	+0.050/+0.160	13.6	14.4	17	0.8	4.6
PCB-14-03	14	+0.050/+0.160	15.6	16.4	19	0.8	4.6
PCB-16-02	16	+0.050/+0.160	17.6	18.4	21	0.8	3.6
PCB-16-03	16	+0.050/+0.160	17.6	18.4	21	0.8	4.6
PCB-18-03	18	+0.050/+0.160	20	21	23	1	5
PCB-20-03	20	+0.065/+0.195	22	23	25	1	5
PCB-25-03	25	+0.065/+0.195	27	28	30	1	5

* d_1 公差为压入标准H7座孔（符合ISO3547-1）后公差 *Tolerance d_1 after fitting into housing H7 (ISO3547-1)

PCB塑料卡箍轴承安装方式 Plastic clip bearings installation method



Step:1



Step:2



Step:3

● 易用手装配 Easy assembly by hands

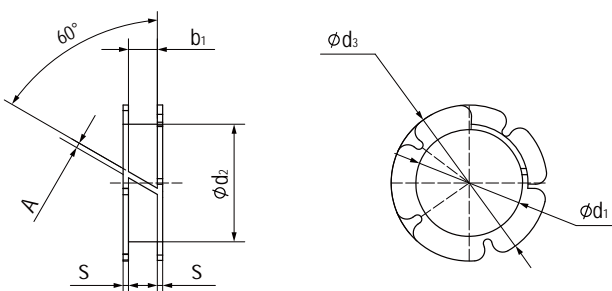
PCB开口法兰塑料卡箍轴承 Opening flange plastic clip bearings



产品特性 Product features

- 标准材料EPB3M
- 法兰开口设计，易装配
- 自润滑，免维护
- 专为汽车座椅设计
- Standard material EPB3M
- Opening flange design, easy installation by hand
- Maintenance free, self-lubricated
- Designed for car seats

标准规格 Standard specifications



产品编码 Part No.:

PCB-1011-020

高度 High

外径 Outer diameter

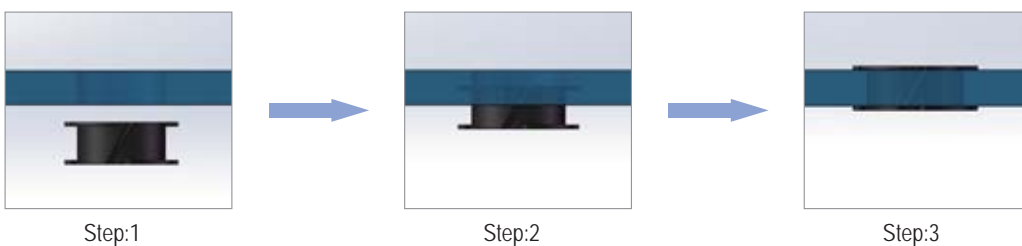
内径 Inner diameter

座孔 Housing: H7 轴 Shaft: h9

产品编码 Part No.	d_1 [mm]	公差 Tolerance [mm]	d_2 [mm]	d_3 [mm]	$S_{\pm 0.05}$ [mm]	$b_1^{+0.15}$ [mm]	A [mm]
PCB-1011-020	10	+0.050/+0.120	11	14.6	0.5	2.1	0.5
PCB-1214-020	12	0/+0.080	14	17.5	1	2	1.5
PCB-1214-025	12	0/+0.080	14	17.5	1	2.5	1.5
PCB-1213-025	12	+0.050/+0.160	13	16.5	0.5	2.6	1.5
PCB-1214-030	12	0/+0.080	14	17.5	1	3	1.5
PCB-1314-040	13	+0.050/+0.160	14	18.5	0.5	4.1	1.5
PCB-1415-032	14	-0.050/+0.020	15	18.5	0.5	3.2	0.8
PCB-1416-020	14	0/+0.080	16	20.5	1	2	1.5

* d_1 公差为压入标准H7座孔（符合ISO3547-1）后公差 *Tolerance d_1 after fitting into housing H7 (ISO3547-1)

PCB塑料卡箍轴承安装方式 Plastic clip bearings installation method



- 易用手装配 Easy assembly by hands

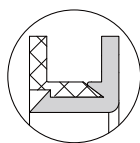
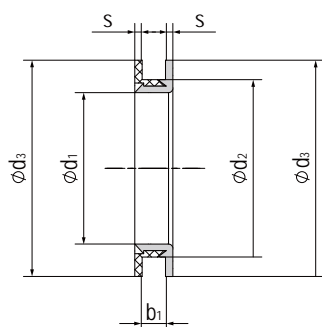
PCB双法兰塑料卡箍轴承 Double flange plastic clip bearings



产品特性 Product features

- 标准材料EPB3M
- 双法兰轴套与卡扣设计，更易安装
- 自润滑，免维护
- 专为汽车座椅设计
- Standard material EPB3M
- Double flange plastic busing, very easy installation
- Maintenance free, self-lubricated
- Designed for car seats

标准规格 Standard specifications



产品编码 Part No.:

PCB2-17.5-030

高度 High

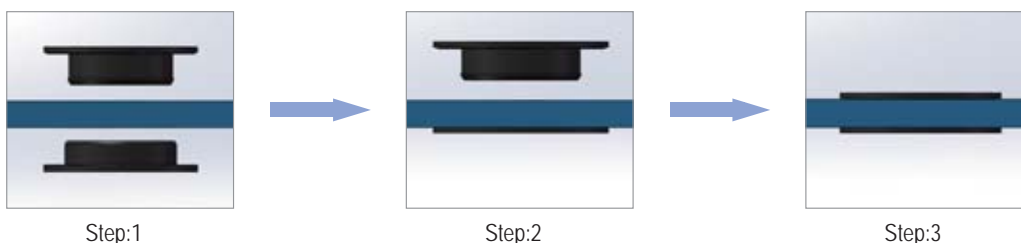
内径 Inner diameter

座孔 Housing: H7 轴 Shaft: h9

产品编码 Part No.	d_1 [mm]	公差 Tolerance [mm]	d_2 [mm]	d_3 [mm]	$S_{-0.10}$ [mm]	b_1 $\begin{matrix} +0.20 \\ -0.10 \end{matrix}$ [mm]
PCB2-17.5-030	17.5	+0.016/+0.086	20.5	25	0.75	3

* d_1 公差为压入标准H7座孔（符合ISO3547-1）后公差 *Tolerance d_1 after fitting into housing H7 (ISO3547-1)

PCB塑料卡箍轴承安装方式 Plastic clip bearings installation method



Step:1

Step:2

Step:3

- 易用手装配 Easy assembly by hands